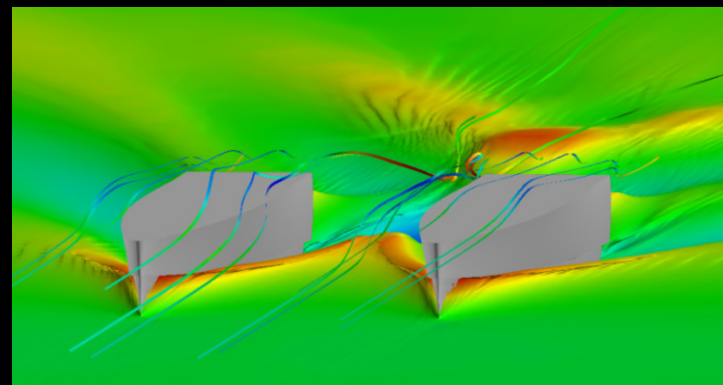


Performance study on calm water on Sophie Yacht hull

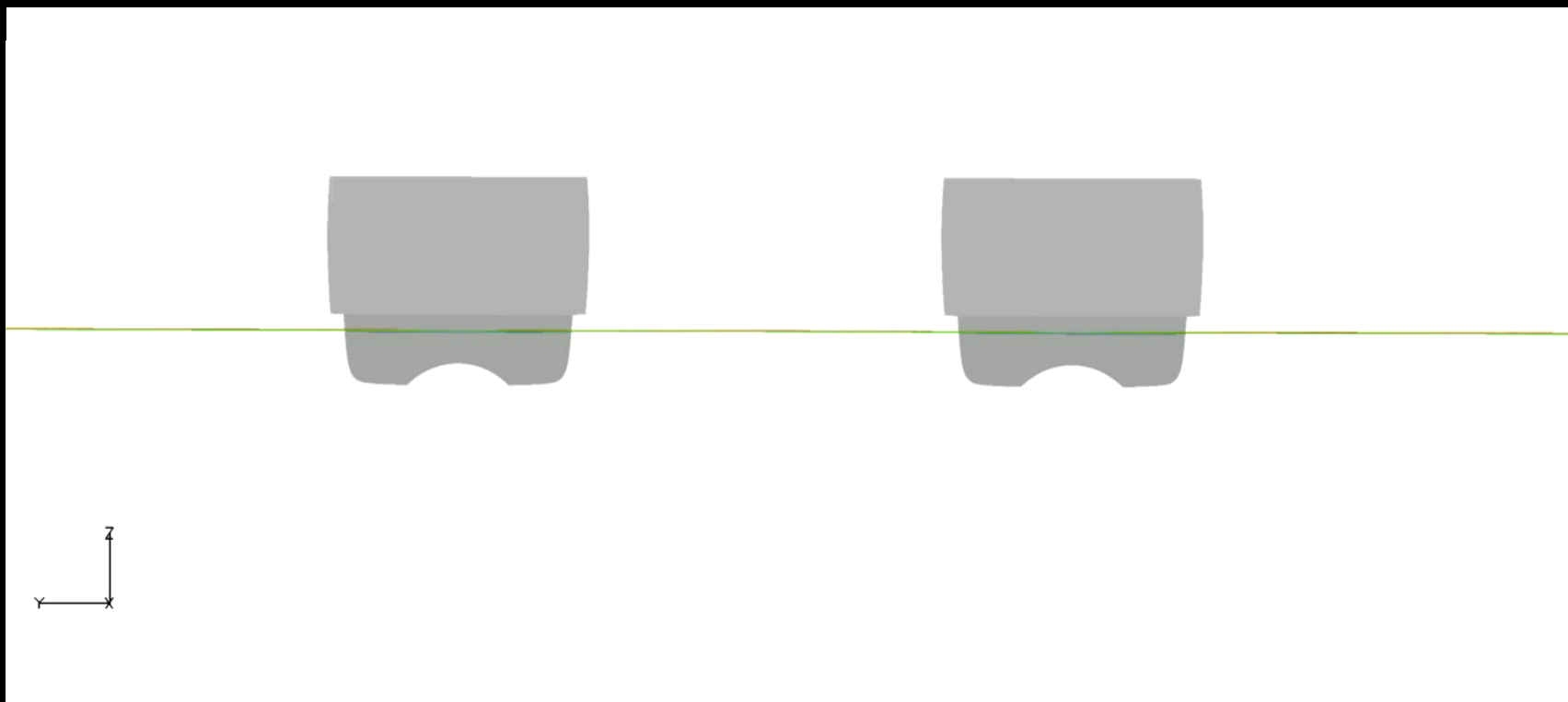
Unsteady RANSE with free surface computation:

- Wave interaction prediction between the two hulls.
- Free surface deformation modelization.
- Viscous and pressure drag prediction.
- Dynamic hull attitude (sinkage and trim) at various boatspeed.



Streamlines and free surface visualization

Computed with *FINE™/Marine*



Backside view of the free surface deformation around the catamaran during the acceleration