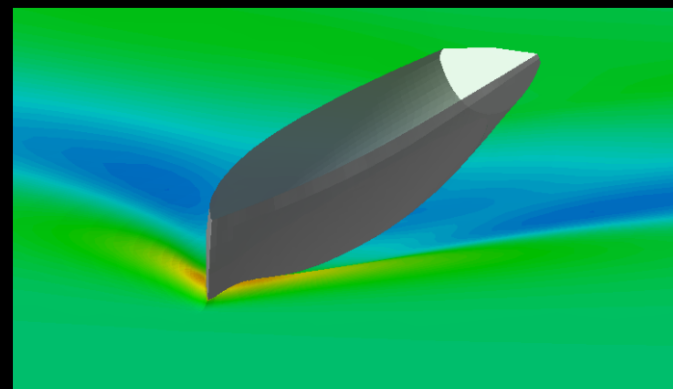


## Performance study on calm water on maxi Sodebo

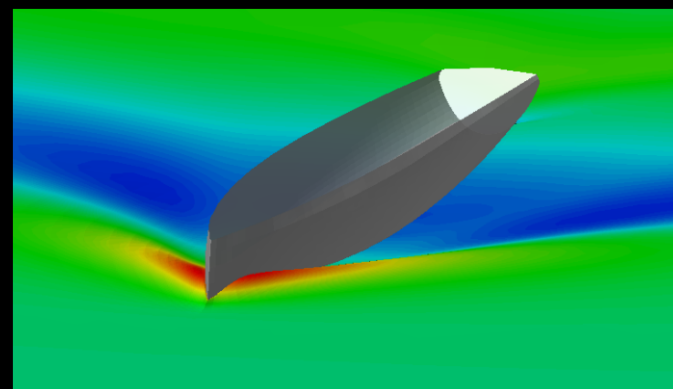
Hydrodynamic study on central hull and float for various speeds and displacements:

- Hull geometric optimisation (length/displacement ratio) of the float and central hull by hydrodynamic computation (CFD)
- Hull shape optimisation (width, draft, ...) by CFD.
- Viscous and pressure drag prediction on central hull and float (several displacements and boat speeds).

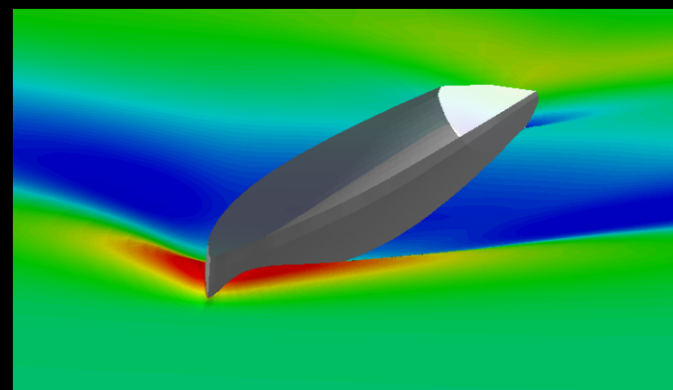
Computed with *FINE<sup>TM</sup>/Marine*



Displacement of 3.9 t



Displacement of 7.15 t



Displacement of 10.4 t

